

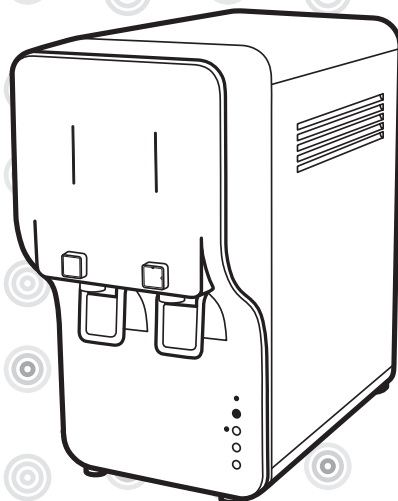


COWAY LOVES THE PLANET
This paper can be recycled.

Coway

Water Filtration Device CHP-260L/N

- This product can not be used if the voltage is different from that mentioned in the rating plate.
- For your safety and proper use of the product, please read this User's Manual before use.
- Warranty card is included in this User's Manual.

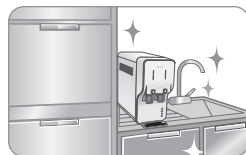


FEATURES

1

Optimal size and elegant design

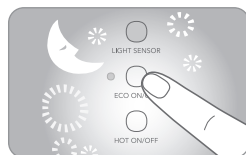
This slim, elegant design fits into even narrow kitchen spaces, making it convenient to use.



2

Energy-saving function using the light sensor

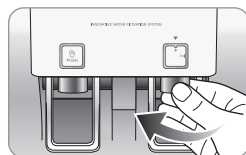
When Power Saving mode is set, the motor and heater automatically run less often, reducing the amount of power consumed.



3

Detachable water taps

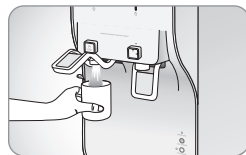
The water taps can be separated for easy cleaning (turn them clockwise to detach).



4

Convenient hot and cold/room water continuous release functions

Push the Cup-Touch Lever for hot or cold/room water upward to continuously dispense hot, cold or room water while the lever is locked in place.



5

Dust-free filtering system

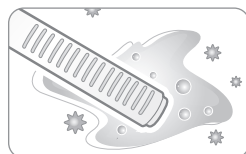
Comes equipped with a Plus Inno-Sense filter to minimize the number of dust particles entering the storage tank.



6

Antibacterial system inside the water tank

An antibacterial filter is installed inside the product to prevent the proliferation of microorganisms.



DEAR CUSTOMERS

Thank you for using **Coway Water Filtration Device**.

Please read this Users' Manual to use and maintain the product correctly.

If you encounter a problem while using the product, you may solve the problem referring to the User's Manual. As this manual contains the product warranty card, please keep it in a safe place.

CONTENTS

FOR INFORMATION

- | 03 | **SAFETY INFORMATION**
 - Danger
 - Warning
 - Caution
- | 07 | **PARTS NAME**
- | 08 | **WATER FILTRATION PROCESS**

HOW TO USE

- | 10 | **INSTALLATION PRECAUTIONS**
- | 12 | **INDICATION / OPERATION PART**
- | 15 | **HOW TO USE**
 - To drink the cold water
 - To continuously dispense cold water
 - To drink the room water
 - To continuously dispense room water
 - To drink the hot water
 - To continuously dispense hot water

MAINTENANCE

- | 17 | **INSTALLATION**
- | 21 | **CLEANING METHOD**
 - Storage tank
 - Gutter
 - Main body
 - Faucets
 - Cup-Touch Lever
- | 25 | **FILTER REPLACEMENT**
- | 26 | **FILTER REPLACEMENT METHOD**

OTHERS

- | 27 | **TROUBLESHOOTING**
- | 28 | **SPECIFICATION**
- | 29 | **WATER FLOW DIAGRAM**
- | 33 | **WARRANTY CARD**

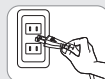
SAFETY INFORMATION

Be careful to keep this safety information.

Please read this information to prevent property loss and ensure your safety.



for 220 V - 240 V~ use only



for 120 V~ use only

▲ Danger : If not observed, serious injury or even death could occur.

- Do not use a damaged power cord or plug, and loose outlet.
- Do not pull the power cord.
- Do not carry the unit by its power cord.
- Do not touch the power plug with a wet hand.
- Do not forcefully bend the power cord or put it under a heavy object to prevent it from being damaged or deformed.
- Do not connect and pull out the power plug repeatedly.
- Remove any dust or water off in the pin and contacts of the power plug.
- Do not plug into an outlet that is being used by several other appliances.
Use an electrical outlet dedicated.
- When you don't use for a long time, close the main water supply valve and unplug.
- Do not attempt to repair or modify the power cord at your discretion.
- In the case the power cord is damaged, do not replace the cord yourself. Call Coway Service Center to have it replaced.
- Do not install near a heating device.
- When the water is coming inside of the product or there is a puddle on the product, call Service Center after closing the supplying valve and unplugging.

-
- If our product produces a strange noise or odd smell, immediately unplug from the electrical outlet and call our Service Center.
 - Do not put the candle, a light for cigarette on the products.
 - Do not place any containers with water, medicine, food, small metallic objects, or any flammable material on the top of the product.
 - Clean after unplugging.

SAFETY INFORMATION

▲ Warning : If not observed, serious injury or property damage could occur.

- If the electric outlet is wet, carefully unplug the unit and let the electric outlet completely dry before subsequent use.
- Unplug the product before repair, inspection, or parts replacement.
- The water cooler is intended to be plugged into a receptacle of the ground fault circuit interrupting type.
- Do not install the product on a sloped floor.
- Do not press the product by constraint or impact.
- Do not clean by spraying the water directly or don't wipe the product using the benzene and thinner.
- Do not repair, disassemble, or modify.
- This appliance is not intended for use by persons (including children) with reduced physical, sensory or mental capabilities, or lack of experience and knowledge, unless they have been given supervision or instruction concerning use of the appliance by a person responsible for their safety.
- Children should be supervised to ensure that they do not play with the appliance.
- This appliance can be used by children aged from 8 years and above.
- The new hose-sets supplied with the appliance are to be used and that old hose-sets should not be reused.

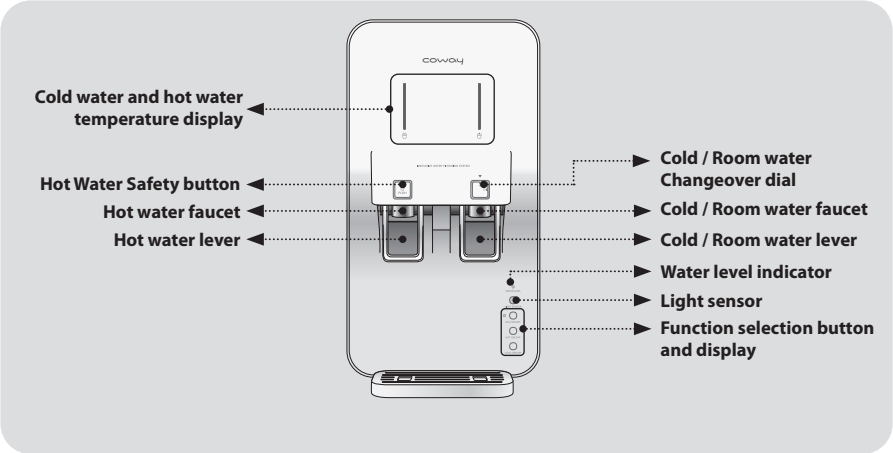
//////

⚠ Caution : If not observed, minor physical injury or property damage may occur as a result.

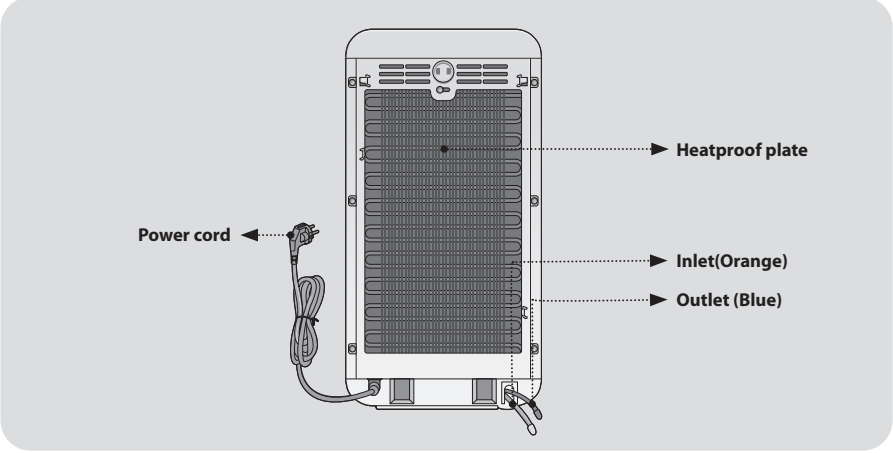
- The filtration device installation shall comply with applicable state and local regulations.
- Use after closing the water tank cover completely inside of the product.
- To drink the filtered water, change the filter according to the filter replacement cycle.
- When you don't use for a long time, use after draining the saved water completely and emptying the newly room water once again.
- Do not allow hot water to come in contact with the human body.
- Do not use filtered water for the water exchange of an aquarium or a fishbowl.
- After moving the product or replacing the Plus Inno-sense filter, the black powder can be remained in the inner bottom of the water tank.
- Do not use with water that is microbiologically unsafe or of unknown quality without adequate disinfection before or after the system.
- Cleaning and user maintenance shall not be made by children without supervision.

PARTS NAME

Front



Rear



WATER FILTRATION PROCESS

The filter is the core technology of the filtration system.

If you don't use qualifying filter or if you use an old filter that has expired, the system performance may degrade.

The 5-step water filtering system (CHP-260L)

STEP 1, 2 : NEO-SENSE FILTER

This neo-sense filter has the functions to remove particulates, dissolved organic and inorganic impurities. It also has the function to remove chlorine, volatile organic compounds(VOC's).

STEP 3 : RO MEMBRANE FILTER

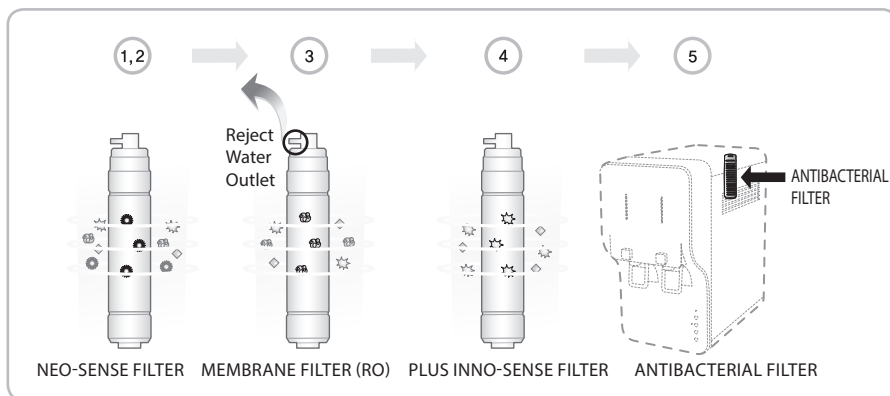
RO membrane filter has the function to remove water contaminants such as heavy metals, waterborne microorganisms and harmful organic chemicals etc.
The water concentrated the harmful material is flowed out through the daily life water hose as the daily life water.

STEP 4 : PLUS INNO-SENSE FILTER

This Plus Inno-sense filter has the functions to remove smell induction material and to improve taste of water.

STEP 5 : ANTIBACTERIAL FILTER*

This Antibacterial Filter has the function to control microorganism propagation in water.



Tips

Uses of reject water

- The reject water should be used for cleaning the restroom, the house, clothes, or purposes other than drinking.
- Never use the reject water for a drinking or cooking.

WATER FILTRATION PROCESS

The filter is the core technology of the filtration system.

If you don't use qualifying filter or if you use an old filter that has expired, the system performance may degrade.

The 5-step water filtering system (CHP-260N)

STEP 1, 2 : NEO-SENSE FILTER

This neo-sense filter has the functions to remove particulates, dissolved organic and inorganic impurities. It also has the function to remove chlorine, volatile organic compounds(VOC's).

STEP 3 : NANO-TRAP FILTER

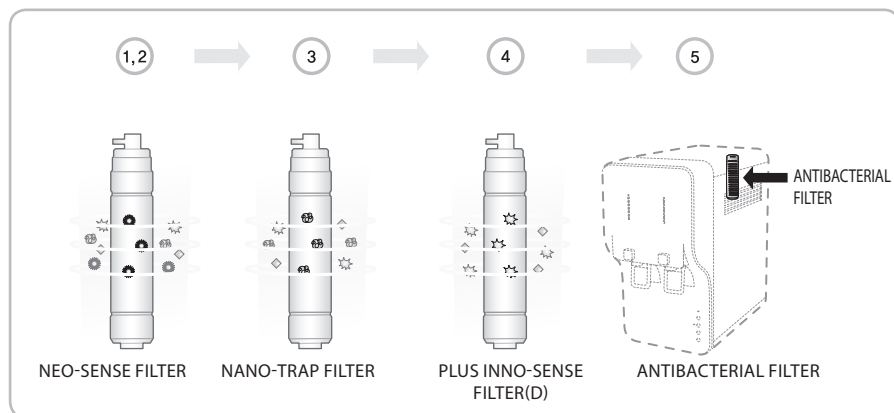
The Nano-Trap Filter removes particulates, waterborne microorganisms, bacteria and virus in water.

STEP 4 : PLUS INNO-SENSE FILTER(D)

PLUS Inno-Sense Filter(D) reduces volatile organic compounds, odors and improves water taste.

STEP 5 : ANTIBACTERIAL FILTER*

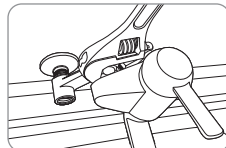
This Antibacterial Filter has the function to control microorganism propagation in water.




INSTALLATION PRECAUTIONS

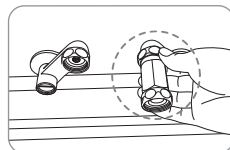
The summary for the proper installation of the water filtration device

1. Close main water supply valve to separate the faucet.



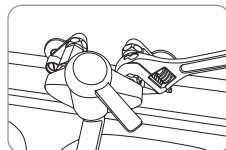
2. Apply the teflon tape on the adaptor and fit it to the pipe.

 Do not turn the water pipe.




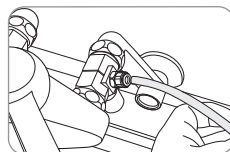
3. Connect the faucet with the adaptor.

 Install the adaptor with connector to the cold water pipe.

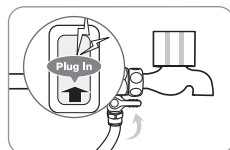


4. Connect 1/4 inch orange tubing with the connector on the adaptor.

 Flush water through each filter at least 5 minutes before Connection.



5. Open the feed valve to supply water to the filtration system.



INSTALLATION PRECAUTIONS

Please check before use!

- ⚠ Only connect the power cord to the voltage rating that matches it on the rating plate.



- **After installing the product**

Get rid of the saved water above the full water in the inner water tank 2 times or more to use.

- **When the indicator in the indication part is turned off**

When the indicator in the indication part is turned off, check if the power supply was stopped due to the power failure or other cause.

- **Regular filter replacement**

It is important to replace the filter regularly to maintain water quality as it is designed. If the filter is overused beyond its service life, the performance of the water filtration device deteriorate. Do not miss the filter replacement cycle.

- **When you didn't use for a long time**

If you saved the water for a long time or you didn't use, drain the water inside of the water filtration device completely and remove the newly filtered water one time to use.

- **When you don't want to use the product for a long time.**

Close the main water supply valve and unplug the power cord.

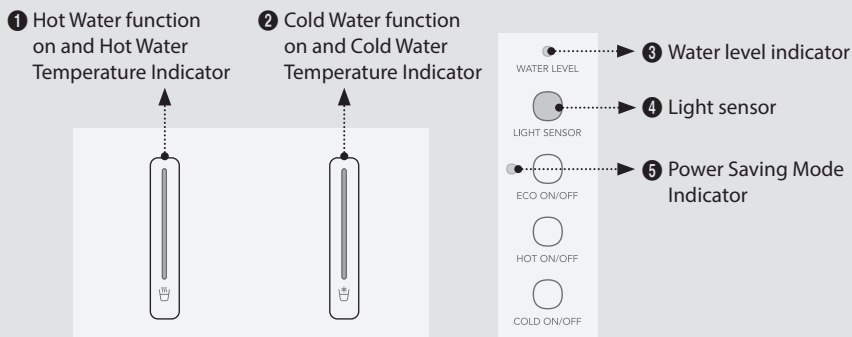


Tips

When you don't use for a long time, close the main water supply valve and unplug the power cord.

INDICATION / OPERATION PART

Indication part



① Hot Water function on and hot water temperature indicator

The indicator lights are illuminated according to the temperature of the hot water. The more lights are illuminated, the hotter the water (three stages).

* When power is connected to the purifier, the indicator is illuminated to show whether or not the Hot Water function is on.



② Cold Water function on and cold water temperature indicator

The indicator lights are illuminated according to the temperature of the cold water. The more lights are illuminated, the cold the water (three stages).

* When power is connected to the purifier, the indicator is illuminated to show whether or not the Cold Water function is on.



③ Water level indicator

The indicator is illuminated when the water level in the interior tank gets low.



④ Light sensor

This sensor detects light around the purifier to decide whether it is day or night.

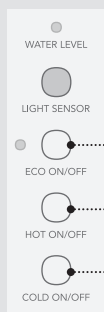


⑤ Power Saving Mode indicator

This indicator is illuminated when Power Saving Mode is selected.

INDICATION / OPERATION PART

Operation part



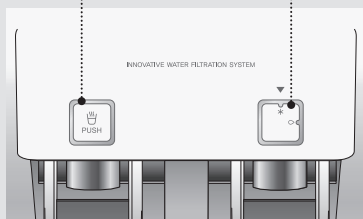
1 Power Saving function selection button

2 Hot Water Mode selection button

3 Cold Water Mode selection button

4 Hot Water Safety button

5 Cold - Room Water Selection dial



1 Power Saving function selection button

Use this to select/cancel selection of Power Saving Mode.

Hold the button for 2 seconds or more and the indicator lights up.

* The Power Saving function is not on initially (When power is connected to the purifier, the Power Saving function is not set).



2 Hot Water function selection button

Use this to select/cancel selection of the hot water function.

Hold the button for 2 seconds or more and the indicator lights up.

* The Hot Water function is not on initially, and when power is turned off, the product's most recent settings are kept.



3 Cold Water function selection button

Use this to select/cancel selection of the cold water function.

Hold the button for 2 seconds or more and the indicator lights up.

* The Cold Water function is not on initially, and when power is turned off, the product's most recent settings are kept.



4 Hot Water Safety button

Press once before dispensing water. If the Hot Water Safety button is not pressed, hot water cannot be dispensed even if the Cup-Touch Lever is pushed.



5 Cold- Room Water Selection dial

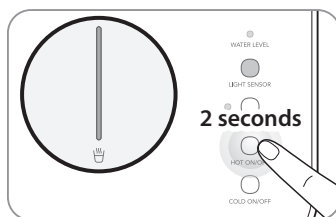
Use this to select cold water or room water.

■ To use the Hot Water function

Press the Hot Water button for 2 or more seconds and check that the Hot Water function is illuminated on the display and the Hot Water Temperature Indicator is illuminated.

To turn off the Hot Water function, press the Hot Water function button for 2 or more seconds again.

* You can get hot water starting about 30 minutes after you turn on the hot water function.

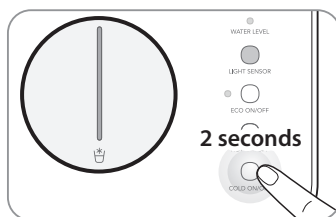


■ To use the Cold Water function

Press the Cold Water button for 2 or more seconds and check that the Cold Water function is illuminated on the display and the Cold Water Temperature Indicator is illuminated.

To turn off the Cold Water function, press the Cold Water function button for 2 or more seconds again.

* You can get cold water about 30 minutes after you turn on the cold water function.

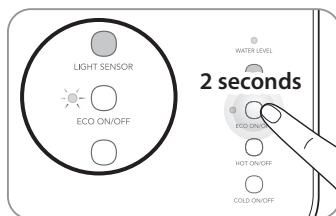


■ To use the Power Saving function

Hold the Power Saving button for 2 seconds or more to turn on the Power Saving function.

The Power Saving indicator blinks when it detects that it is night.

* If the Power Saving indicator is lit, the cold water temperature will be kept warmer when the area around the purifier is dark.



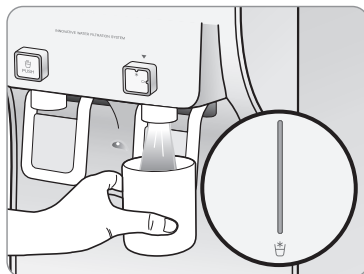
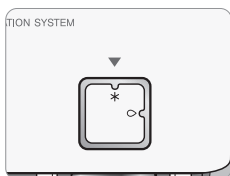
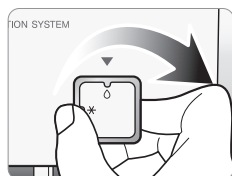
Tips

- If cold water is not released from the water purifier, check that the Cold Water Mode indicator is lit up on the display (see p. 11).
- When the level of room water inside the water tank is low, you may not be able to get as much water as usual.
- When there is a power failure or the power cord is reconnected, the machine is reset to its most recent settings.
- This product has a Power Saving function when not in use. If it is not used for a long time (about 9 hours), the hot water temperature is automatically kept lower and the cold water temperature higher to help reduce electricity costs. When in Power Saving mode when not in use, hot water may be cooler and cold water warmer than usual.

HOW TO USE

To drink the cold water

Press the Cold Water button and check that the Cold Water indicator is lit on the display. Turn the Cold Water - Room Water Selection dial to the right and push the touch lever.

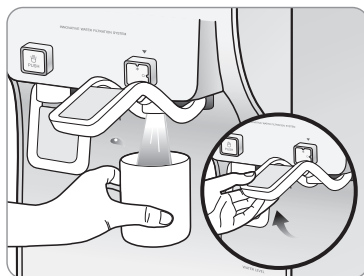
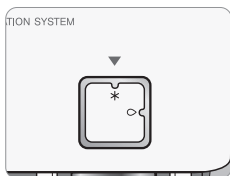
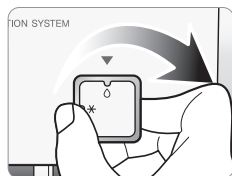


Tips

- If cold water is not dispensed from the water purifier, check that the Cold Water indicator is lit up on the display (see p. 11).

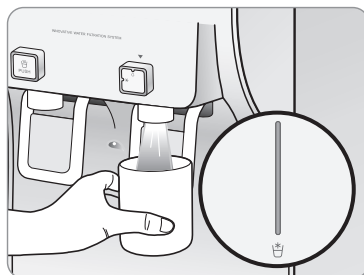
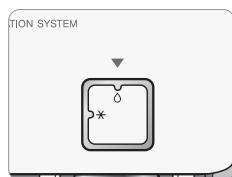
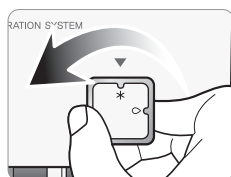
To dispense continuous cold water

Press the Cold Water button and check that the Cold Water indicator is lit on the display. Turn the Cold Water - Room Water Selection dial to the right and move the Cup-Touch Lever upward to lock the lever in place.



To drink the room water

Turn the Cold Water - Room Water Selection dial to the left and push the Cup-Touch Lever.

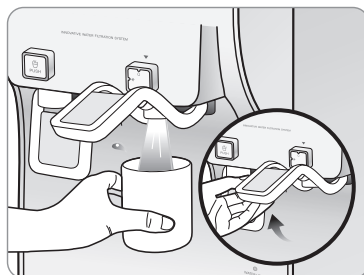
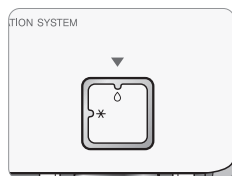
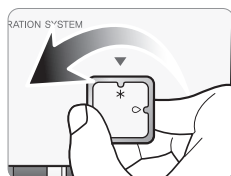


Tips

- If cold water is not dispensed from the water purifier, check that the Cold Water indicator is lit up on the display (see p. 11).

To dispense continuous room water

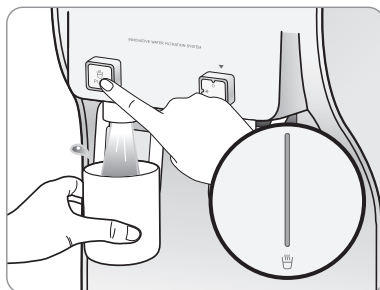
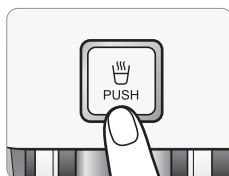
Turn the Cold Water - Room Water Selection dial to the left and move the Cup-Touch Lever upward to lock the lever in place.



HOW TO USE

To drink the hot water

Press the Hot Water Safety button and push the Cup-Touch Lever. Press the Hot Water function selection button and check that the Hot Water indicator is lit. Push the Hot Water Safety button once more.

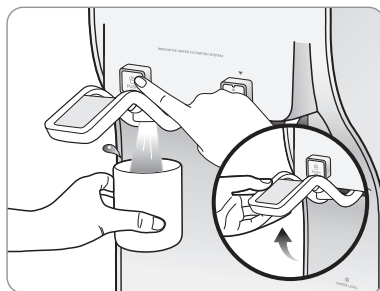
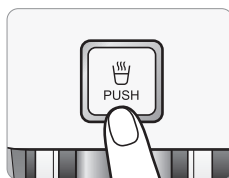


Tips

- If hot water is not dispensed from the water purifier, check that the Hot Water indicator is lit up on the display (see p. 11).
- Beware of burns when using the Hot Water function.

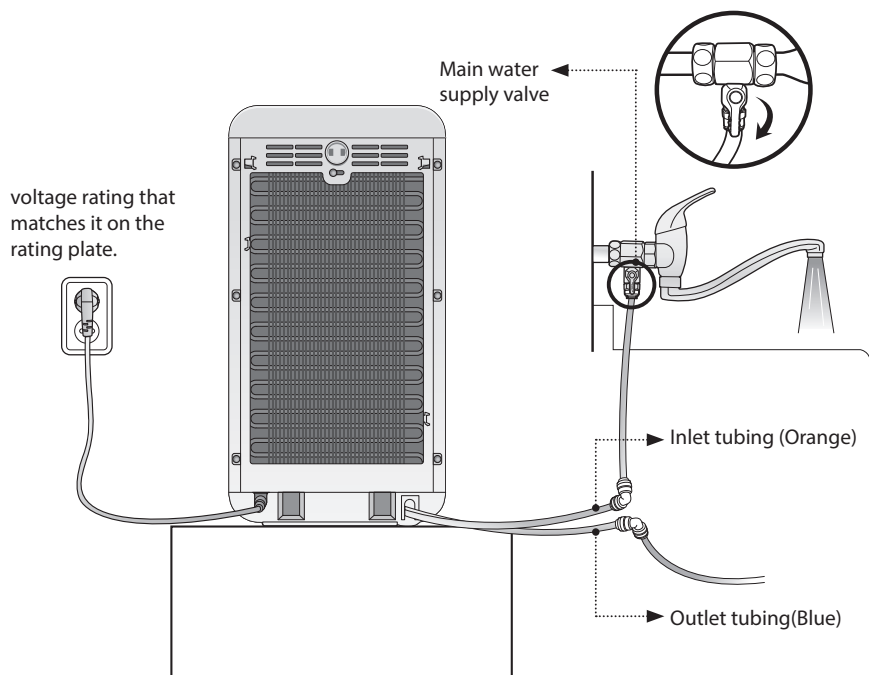
To dispense continuous hot water

Press the Hot Water Safety button and move the Cup-Touch Lever upward to lock the lever in place. Press the Hot button and check that the Hot Water indicator is lit on the display.

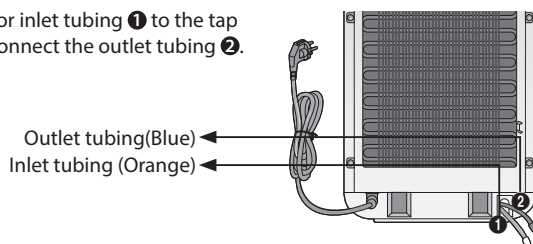


INSTALLATION

Follow the instruction for installation (CHP-260L)

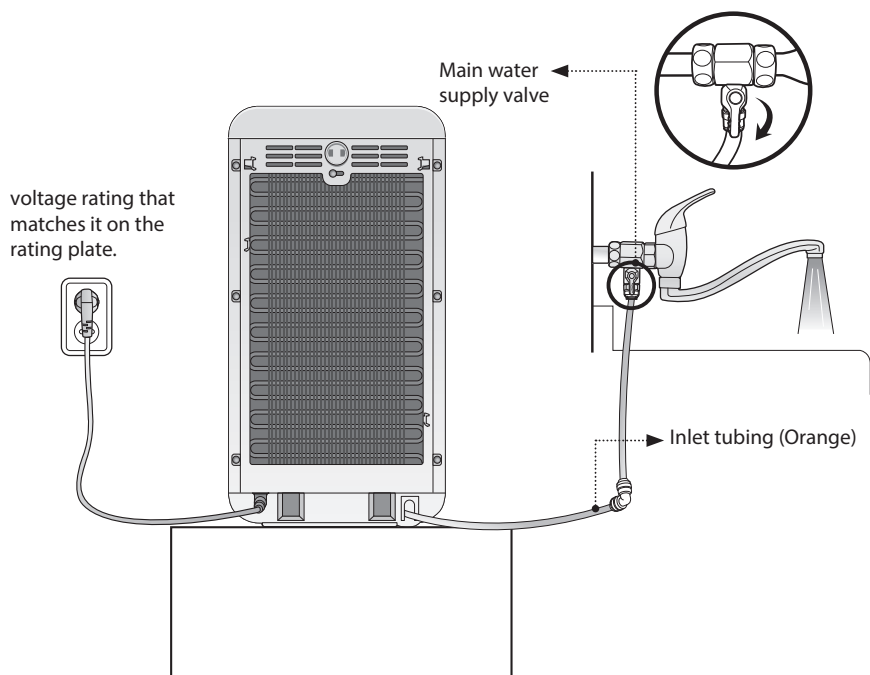


Connect the orange color inlet tubing **1** to the tap water supplying pipe. Connect the outlet tubing **2**.

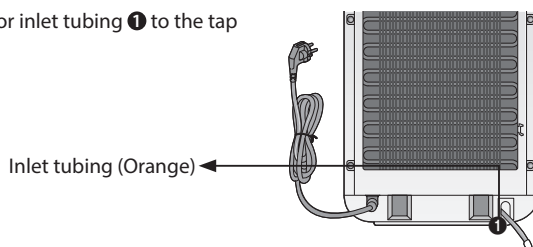


INSTALLATION

Follow the instruction for installation (CHP-260N)



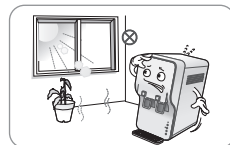
Connect the orange color inlet tubing ❶ to the tap water supplying pipe.



Be cautious!

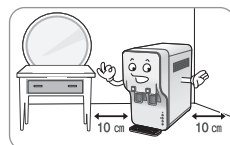
■ Water filtration device installation place 1

Please install the water filtration system not at a rough place, a damp place, a place where the unit is exposed to the direct sunlight, a place where dust is present, or a place that the water drops.



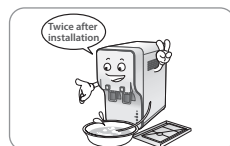
■ Water filtration device installation place 2

Please install at the place where it is 10 cm or more off from the wall and the bottom is flat and firm.



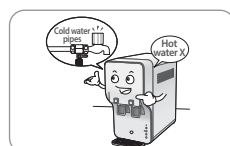
■ After installing the water filtration system

Please empty the water tank filled with filtered water two times after the product installation.



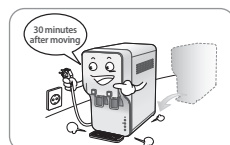
■ Cold water plumbing

Please connect the source water. Make sure that the source water is not from hot water line. If you use hot water as source water, then it will cause permanent damages to filters and severely degrade the product performance.



■ Movement and installation

When the position is moved, connect the power cord when 30 minutes passes after installing.



Tips

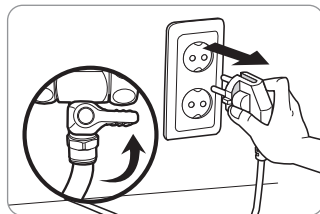
To maintain optimal product performance, consult a Coway engineer for the detailed installation methods.

- ⚠ There may be some water remaining inside of the filter which was used to test the product during inspection process at the factory. Please feel at easy and use as it isn't the used product.
- ⚠ Don't reuse the main water supply valve and hose that was previously used when you re-install the product.

CLEANING METHOD

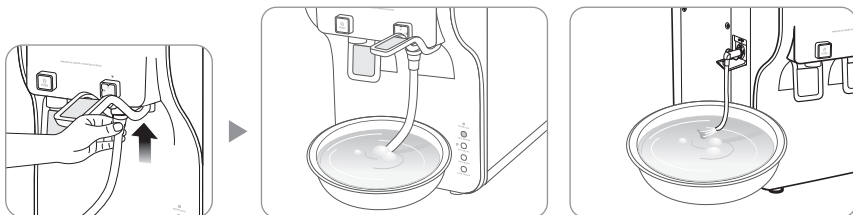
Storage tank

1. Hold the cold water/hot water function buttons at the front of the machine for 2-3 seconds each to turn it off and unplug the power cord. Lock the water supply valve.

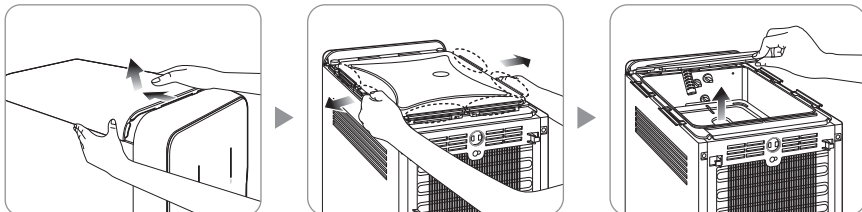


2. Use the outlet tubing and cold/room water taps to completely drain all water from inside the purifier.

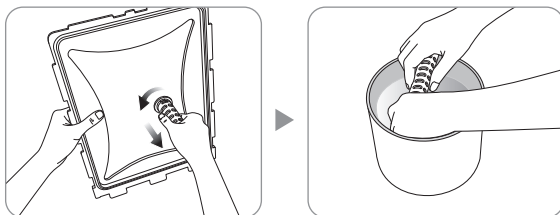
* Drain the cold/room water tank from the cold/room water tap and the hot water tank from the side drain.



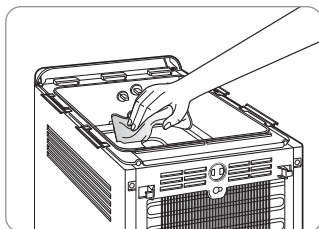
3. Push the upper cover of the product to open. Open the clips (in 6 places) affixing the interior storage tank and then open the interior water tank cover upward.



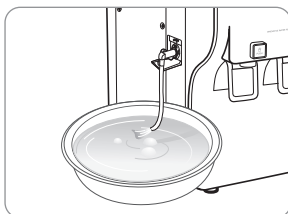
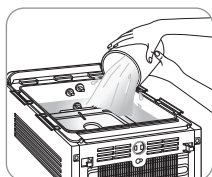
4. Turn the antibacterial filter on the interior water tank cover to detach it and shake it in water taken in advance from the machine to wash.



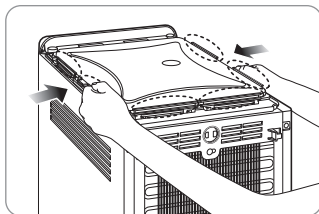
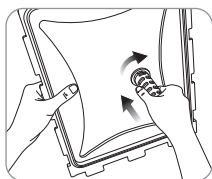
5. Wipe the interior water tank surfaces with a soft cloth.



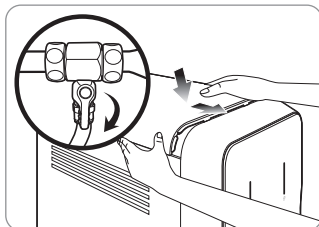
6. Rinse the interior water storage tank clean with water taken in advance from the machine, and then use the outlet tubing to completely drain. Run purified water through the product once and empty, and then use.



7. Turn the antibacterial filter to attach it to the interior water tank cover and then close the interior water tank cover. Fasten the clips (in 6 places) affixing the interior water tank.



8. Close the upper cover and plug in the power cord, then turn on the water supply valve. Check that water comes from the cold/room and hot water taps and then press the Hot/Cold Water function selection button on the front of the product to restart it.

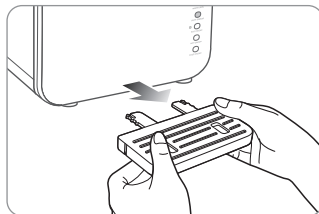


CLEANING METHOD

Gutter

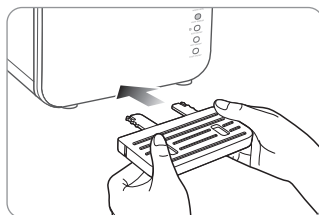
1. Detaching the gutter

Pull the front of the gutter to detach it easily.



2. Reattaching the gutter

Attach the gutter ring (hook) to the machine and then gently push.



Tips

⚠ Completely close the interior water storage tank cover. Otherwise, insects or dirt may enter.

⚠ Do not use chemicals or detergent when cleaning the interior water storage tank. If chemicals or detergent are not completely washed away, they may be hazardous to your health.

- Always keep the surrounding environment clean and clean the interior water storage tank about once every two months.

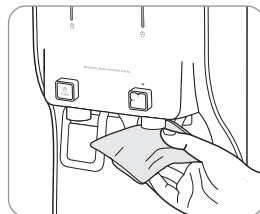
Drugs,
detergent, etc. X



Main body

Wipe with a soft, dry cloth.

* If there is severe contamination, use a damp cloth (do not use abrasives).



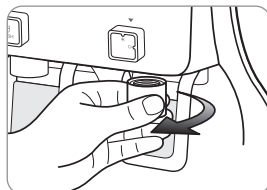
Tips

- Do not immerse the product in water to clean it.

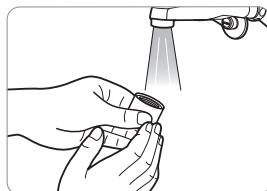
- Do not clean using thinners, benzene, rough cloths, or detergent containing abrasives.

Faucets

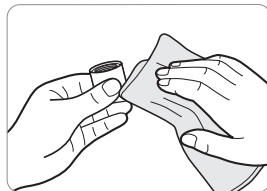
1. Turn the taps in a clockwise direction to detach.



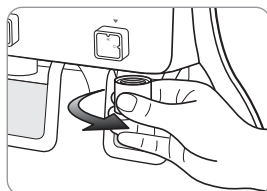
2. Wash the detached taps in running water.



3. Remove moisture from the taps with a soft, dry cloth.



4. After cleaning is finished, turn the taps in a counterclockwise direction to reattach.



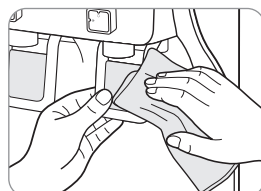
Tips

⚠ Never clean using cotton balls.
Bits of cotton or other foreign matter
may remain.

Cup-Touch Lever

Wipe dirty areas of the Cup-Touch Lever with a soft, dry cloth.

* If it is severely contaminated, wipe with a wet cloth.



FILTER REPLACEMENT

■ Filter

Filter is a critical component for a water filtration system. Replacing authorized filters at a specified replacement cycle is important to maintain the water quality, and a proper system operation. Please replace filters at a specified replacement cycle. For replacement filters, please contact Coway authorized dealers and distributors.

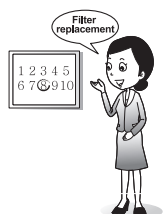


■ Filter replacement cycle

If the filter is not regularly replaced, it may degrade the water quality from the product. The source water quality can shorten the filter replacement period.

CHP-260L

Names of Filter	Replacement Cycle
NEO-SENSE FILTER	6
RO MEMBRANE FILTER	20
PLUS INNO SENSE FILTER	18
ANTIBACTERIAL FILTER **	12



CHP-260N

Names of Filter	Replacement Cycle
NEO-SENSE FILTER	6
NANOTRAP FILTER	12
PLUS INNO SENSE FILTER(D)	6
ANTIBACTERIAL FILTER **	12

■ About filter replacement cycle

The filter replacement cycle described above is not the filter quality warranty period but the expected cycle (life) that the filter shows its original performance.

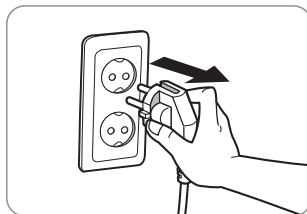
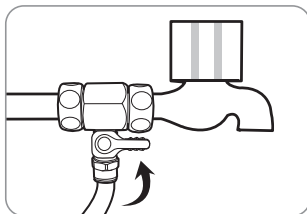
Therefore, the filter replacement cycle may be reduced for the area with the poor water quality or more water consumption.



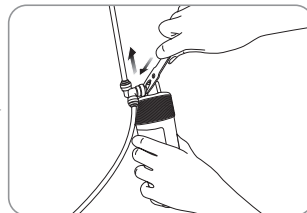
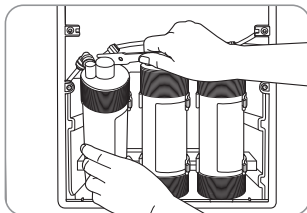
FILTER REPLACEMENT METHOD

Exchange the filter

1. Close the water supply valve and completely drain all water from inside the product, and then pull out the power plug.



2. Remove fittings connecting the filter you wish to exchange, and then exchange the filter (use the correct tool to remove the fittings).



Tips

- ⚠ After exchanging the filter, connect fittings and hoses precisely and check that there are no leaks. Be sure to first drain purified water.

3. Insert the lower part of the side cover precisely in its place.



Tips

- ⚠ Use new filters only after washing.
- Neo-Sense filter: Install after washing with source water for about 1 minute.
 - Membrane (RO) filter: Install the filtered water valve after washing with source water for about 5 minutes.
 - Nanotrap filter: Flush with feed water for 3 minutes. Then install the filter.
 - Plus Inno-Sense Filter: Install with no separate flushing.

TROUBLESHOOTING

The water filtration device may operate abnormally due to minor causes not because of the product malfunction but because of the fact that the user is not familiar with the product use. In such a case, problems can be solved easily even without the help from the Service Center by checking the following items. If you can't solve the problem after checking the following items, please call the Service Center.

Symptom	Check	Measures to take
The water tastes weird.	• Did you clean the storage tank?	Clean the storage tank.
	• You didn't use the water filtration device for a long time.	Get rid of the saved water and clean the storage tank.
	• Isn't it about time to change the filter?	Request the filter replacement.
The water doesn't come.	• Is the water supply cut or isn't the water supply valve closed?	Open the main water supply valve.
	• Did you miss the filter replacement times?	Request the filter replacement.
The water is flowing slower.	• Isn't it about time to change the filter?	Request the filter replacement.
	• Does the main power connect to the voltage rating that matches it on the rating plate?	Connect the power cord to the voltage rating that matches it on the rating plate.
	• Didn't you close the main water supply valve?	Open the main water supply valve.
	• Didn't the temperature of the main water drop suddenly?	If the water temperature is lowered, the water amount is decreased.
The cold water / hot water doesn't come.	• Was the cold water mode indicator lightened?	Please press the cold water mode selection button.
	• Didn't you close the main water supply valve?	If it is the low water level to protect the electric motor, the cooling function doesn't operate. Open the main water supply valve.
	• Isn't the back side of the water filtration device and the wall too close?	Please keep the distance between the back of the water filtration device and the wall to 10 cm or more.
All operation was stopped suddenly when driving.	• Is the main water being supplied actively?	Check the main water supply valve.
	• Does the main power connect to the voltage rating that matches it on the rating plate?	Connect the power cord to the voltage rating that matches it on the rating plate.
	• Isn't water overflowing or leaking?	Request A/S.

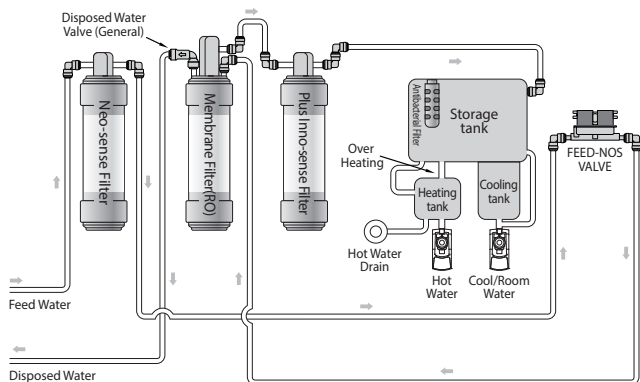
SPECIFICATION

Product		Water Filtration Device	
Model		CHP-260L	CHP-260N
Power Supply		Refer to the rating plate.	
Water tank capacity	Room water	2.5 L	
	Cold water	2.3 L	
	Hot water	1.0 L	
	Total	5.8 L	
Dimension		260 mm (W) x 483 mm (D) x 500 mm (H)	
Working Temperature		5 °C - 35 °C	
Production Rate		76 L/d (25 °C, 0.14 Mpa)	720 L/d (0.10 Mpa)
Working Pressure		137 kPa – 827 kPa	69 kPa – 827 kPa
Net Weight		18 Kg	

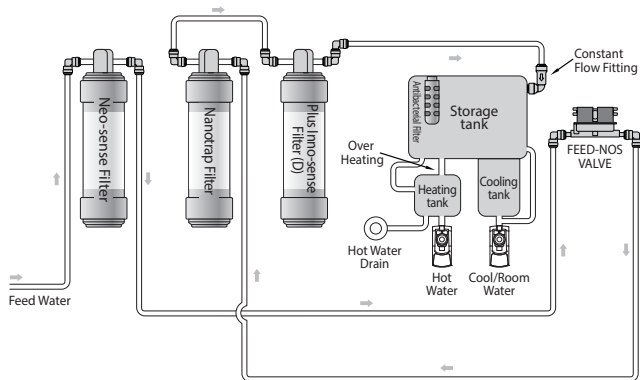
- The water amount can be differentiated according to the water pressure and the water temperature.
- The water tank capacity is the amount by the size and can be different from the extraction capacity.
- Without any prior notice, all or parts of the product are subject to change for the purpose of improving the performance of the product.
- Refer to Performance data sheet for individual contaminants, reduction performance and general operating information.

WATER FLOW DIAGRAM

CHP-260L



CHP-260N



MEMO

////////////////////////////////////

MEMO

////////////////////////////////////

MEMO

////////////////////////////////////

WARRANTY CARD OR WARRANTY LETTER
ONE YEAR LIMITED WARRANTY
WATER FILTRATION DEVICE CHP-260L ("PRODUCT")

Model:

Serial Number:

Customer Name:

("OWNER")

Date of Purchase:

What This Warranty Covers:

Commencing with the date of purchase of the Product and continuing for a period of one year, if manufacturing defects in the Product cause the Product to not operate properly for its intended use, then subject to the exclusions, conditions, and limitations contained herein, COWAY at its sole option will repair or replace the Product.

Decisions as to the extent of repair or replacement required will be made solely by COWAY.

The remedy under this Warranty is available only for that portion of the Product exhibiting defects at the time of the warranty claim. The replacement Product as well as any remaining original Product will be warranted only for the original one year warranty period. This limited warranty applies only to Product used for an application specified by COWAY for the Product and applied in strict accordance with COWAY published specifications in effect at the time of application. IF PRODUCT IS USED FOR OTHER THAN ITS INTENDED PURPOSE, IT IS SOLD AS IS AND WITHOUT ANY EXPRESS OR IMPLIED WARRANTIES, INCLUDING OF MERCHANTABILITY OR FITNESS FOR A PARTICULAR PURPOSE.

What This Warranty Does Not Cover:

This Warranty warrants that the Product will be free from manufacturing defects which affect the ability of the Product to operate for its intended use; it is not a warranty that the Product will never require repairs or to undertake responsibilities, liabilities or obligations other than those specifically identified in the preceding section. COWAY is not responsible or liable for personal injury or property damage of any kind, even if arising from a breach of this Warranty.

Limitations and Exclusions:

TO THE EXTENT PERMITTED BY APPLICABLE LAW, COWAY DISCLAIMS ANY OTHER WARRANTY EXPRESS OR IMPLIED, THAN THAT GUARANTEES FOR HEREIN. THIS WARRANTY IS IN LIEU OF AND EXCLUDES ALL OTHER WARRANTIES, PROVIDES, CONDITIONS AND REPRESENTATIONS, EXPRESS OR IMPLIED, ORAL OR WRITTEN, STATUTORY OR OTHERWISE, INCLUDING BUT NOT LIMITED TO ANY IMPLIED CONDITIONS OR WARRANTIES AS TO THE MERCHANTABILITY OR FITNESS FOR A PARTICULAR PURPOSE OF THE COWAY PRODUCT. SOME STATES DO NOT ALLOW LIMITATIONS ON HOW LONG AN IMPLIED WARRANTY LASTS, SO THE ABOVE LIMITATION MAY NOT APPLY TO YOU. COWAY DOES NOT AUTHORIZE ANY PERSON INCLUDING ITS REPRESENTATIVES, TO MAKE ANY REPRESENTATION OR TO OFFER ANY WARRANTY, CONDITION OR GUARANTY IN RESPECT OF THE PRODUCT OTHER THAN THIS WARRANTY. THIS LIMITED WARRANTY SHALL BE THE OWNER'S SOLE AND EXCLUSIVE REMEDY AGAINST COWAY AND COWAY SHALL NOT BE LIABLE FOR ANY CONSEQUENTIAL, EXEMPLARY, SPECIAL, INCIDENTAL OR OTHER DAMAGES INCLUDING, BUT NOT LIMITED TO, LOSS OF PROFITS, AND LOSS OF USE. INCIDENTAL, CONSEQUENTIAL AND EXEMPLARY DAMAGES SHALL NOT BE RECOVERABLE EVEN IF THE REMEDIES OR THE ACTIONS PROVIDED FOR IN THIS WARRANTY FAIL OF THEIR ESSENTIAL PURPOSE. SOME STATES DO NOT ALLOW THE EXCLUSION OR LIMITATION OF INCIDENTAL OR CONSEQUENTIAL DAMAGES, SO THE ABOVE LIMITATION OR EXCLUSION MAY NOT APPLY TO YOU. COWAY SHALL NOT BE LIABLE FOR ANY DAMAGES WHICH ARE BASED UPON NEGLIGENCE, BREACH OF WARRANTY, STRICT LIABILITY OR ANY OTHER LEGAL THEORY OF LIABILITY OTHER THAN THE EXCLUSIVE LIABILITY SET FORTH IN THIS WARRANTY

Limitations on Implied Warranties:

Any implied warranty of merchantability or fitness for a particular purpose or use, shall be limited to the duration of the foregoing express written warranty.

Conditions of Warranty:

COWAY's continuing liability under this Warranty is conditioned upon the following :

- a) The defect or damage is not caused by or is the result of : abnormal use or conditions; improper storage, unauthorized modifications or repair; misuse, neglect, accident, alteration, improper installation or other acts that are not the fault of Coway or the manufacturer of the product or that are not covered by the manufacturer's warranty;
- b) The Product has not been altered, modified or repaired without prior written approval of COWAY;
- c) The OWNER has notified COWAY in writing of any failure of the Product covered by this Warranty within thirty (30) days following such failure;

- d) There has been no misuse, abuse or negligence with respect to the Product on the part of the OWNER.

Waiver:

COWAY's failure at any time to enforce or rely upon any of the terms or conditions stated herein shall not be construed to be a waiver of its rights hereunder.

Obtaining Warranty Service and OWNER'S Duties:

If the Product fails to operate for its intended purpose, then notify Coway or its Representative Agency within 48 hours or within the next business day after discovery of any defect in the Product. The OWNER must give written notice to COWAY no later than thirty (30) days after a defect is discovered or should by reasonable diligence have been discovered. Claims under this Warranty will require proof of purchase by the OWNER.

KOREA

Add : COWAY Co., Ltd.
136-23, Yugumagoksa-ro, Yugu-eup, Gongju-si,
Chungcheongnam-do, 32508 Korea
Tel. : 041-850-7879

USA

Add : Coway USA, Inc.
4221 Wilshire Blvd. #210, Los Angeles, CA 90010
Call center. : 213-386-3033

THAILAND

Add : Coway (Thailand) Co., Ltd.
75/104-106 Ocean Tower 2 38th Fl, Soi Sukhumvit 19
(Wattana), Sukhumvit Road, Klongtoey Nua, Wattana,
Bangkok 10110
Call center : 02-261-0209

MALAYSIA

Add: Coway (Malaysia) Sdn. Bhd.
Level 20, Ilham Tower, No. 8, Jalan Binjai, 50450 Kuala
Lumpur.
Call center : 1-800-888-111

The Coway logo is displayed in a white, lowercase, sans-serif font. The letters are closely spaced, and the 'y' has a distinctive, slightly curved tail.

www.coway.com