

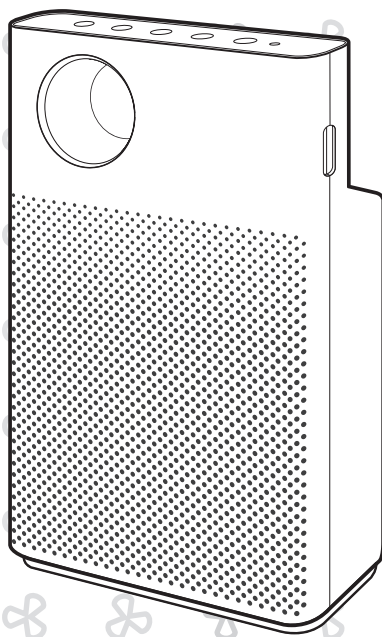


COWAY LOVES THE PLANET
This paper can be recycled.

COWAY

Coway Air Purifier AP-1018F

- This product is for domestic use only. It cannot be used in an overseas country where the power voltage is different.
- Read and save these instructions.

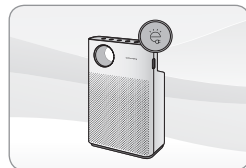


FEATURES

1. Smart eco

The smart power saving feature automatically switches to smart eco mode if the purifier does not run for a set period of time.

- Enters standby mode when the air stays clean for at least 10 minutes.



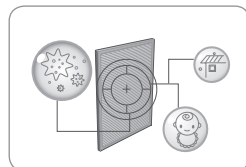
2. Excellent air purification ability

A powerful HEPA filter removes fine dust from indoor air as part of an optimized filter system that quickly eliminates contamination.



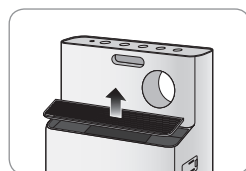
3. Fine dust filter

Coway's customized filter that effectively removes fine dust (PM10) and protects the HEPA filter.



4. Detachable air vent grille

Detachable vent grilles are installed on the purifier top for easier, more effective cleaning than in other products with fixed covers.



5. Elegant design

A slim, neat design makes this purifier blend in anywhere.



DEAR CUSTOMERS

Thank you for using the **Coway air purifier**.

Please be sure to read this instruction manual to use and maintain your air purifier correctly.

If you experience any problems during use, you can refer to this instruction manual to resolve them.

CONTENTS

FOR INFORMATION

- | 03 | **SAFETY INFORMATION**
 - Danger
 - Warning
 - Caution
- | 07 | **PARTS NAME**
- | 09 | **AIR PURIFICATION PROCESS**

MAINTENANCE

- | 15 | **CLEANING METHOD**
 - Product
 - Filter
- | 17 | **FILTER REPLACEMENT**

HOW TO USE

- | 10 | **BEFORE USE**
 - How to install filter
- | 11 | **INDICATORS AND BUTTONS**
- | 13 | **HOW TO USE**
- | 14 | **ADJUST PARTICLE SENSOR**

OTHERS

- | 19 | **TROUBLE SHOOTING**
- | 20 | **PRODUCT SPECIFICATION**

- Keep your instruction manual in a readily accessible or visible place.-

SAFETY INFORMATION

This is safety information. Be sure to follow it!

The warnings are to keep users safe and avoid damage to the product.

Please read them carefully and use the product correctly.

⚠ DANGER : Failing to follow the precautions below may result in serious injury or even death.

- Do not use damaged power plugs or loose sockets.
- Only connect the power cord to the voltage rating that matches it on the rating plate.
- Do not pull on the power cord to move the device.
- Do not touch the power plug with wet hands.
- To avoid damaging or warping the power cord, do not use excessive force to bend the power cord or put heavy objects on top of it.
- Do not repeatedly connect and disconnect the power plug.
- If water enters the power supply, unplug the power and completely dry before using again.
- Be sure to unplug the power during product repair, maintenance or part replacement.
- If the power plug's pins or contact area become covered in dust or water, wipe them thoroughly.
- Do not plug several electric appliances into one socket, and use only a dedicated socket.
- Unplug the power when not used for a long time.
- Do not carelessly connect or tamper with the power cord.
- If the power cord is damaged, do not replace it yourself. Contact a service center to have it replaced.
- Do not install near electric heaters.
- Do not put on top of electric products like heaters or televisions.
- Do not install in places with a lot of humidity or dust or places where water (rainwater) splashes.

-
- Do not use or store combustible gases or flammable materials near this product.
 - If there is a strange sound, burning smell, or smoke from the device, immediately unplug the power plug and contact a service center.
 - Never immerse the product in water.
 - Do not spray flammable materials such as insecticides or air fresheners on the intake.
 - Do not open, repair, or modify the device yourself.
 - Do not put bowls of water, chemicals, food, small metal objects, or flammable materials on top of this product.
 - Unplug the power before cleaning.
 - If the purifier falls over and gets wet during use, A/S maintenance is required before further use.
 - Do not spray water directly on the device or use benzene, thinners, etc. to wipe it during cleaning.
 - Do not insert sharp objects such as picks into the air quality sensor.
 - Do not put fingers or foreign matter (pins, sticks, coins, etc.) into the vent.
 - Do not let children hang from or climb on the purifier.
 - Be careful that children do not put their hands in the vent.
 - Replace the filter with a new one when the time comes.
 - Do not spray water directly on the purifier.

SAFETY INFORMATION

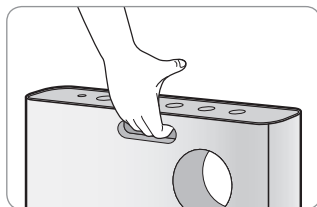
⚠ WARNING : Failing to follow the precautions below may result in considerable physical injury or property damage.

- Do not unplug by pulling on the power cord.
- Plug into a power socket connected to an earth leakage circuit breaker (current sensitivity 30 mA or less).
- If extending the power cord, only use with sockets and cords of 250V/15A and use by itself.
- Do not use in baths, showers, swimming pools, or other areas where the purifier may be in direct contact with water.

⚠ CAUTION : Failing to follow the precautions below may result in slight physical injury or property damage.

- Do not unplug the power or move the purifier while it is operating.
- If unusual sound, odor, or smoke comes from the purifier, immediately unplug the power and call our service center.
- Do not install on a slope.
- Do not excessively impact or use excessive force on this product.
- Use at least 20 cm away from walls or other objects on each side.
- Install the purifier in a place where it is not blocked on any side so air can circulate well.
- Install at least 2 m away from TVs and other electronic items.
- Do not use in BBQ or other restaurants where odor, smoke, or oil may occur.
- Do not use in direct sunlight.
- Do not install in a high place.
- Do not use extreme force on the purifier.

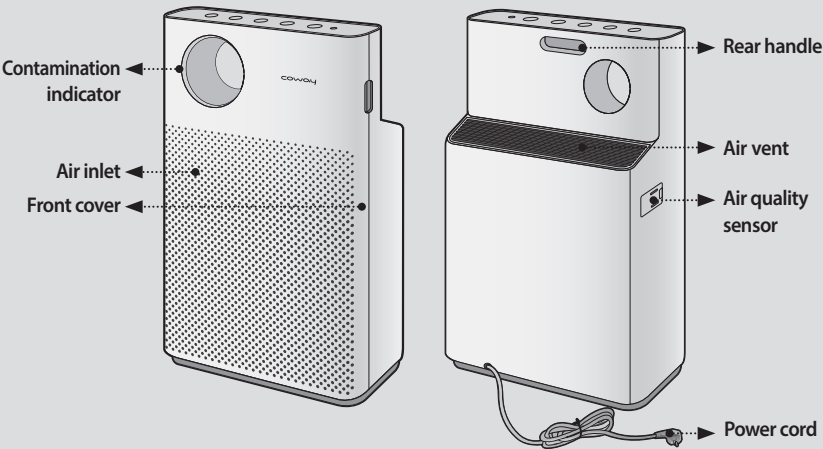
- Do not push or lean on the purifier. The purifier may fall over.
- Do not use for a long time in places that are sealed or where children, the elderly, or sick people are.
- Do not block the vent with laundry or curtains.
- Remove dust from the pre-filter with a vacuum cleaner or water.
- Periodically wash the pre-filter and dry it well in a shady place with good ventilation.
- People with physical, sensory, or mental impairment as well as children must be supervised or guided while using the device.
- It is advisable to supervise children so they do not play with the device.
- When moving the purifier, lift the top as well with your thumb as in the photo. The purifier may fall over.



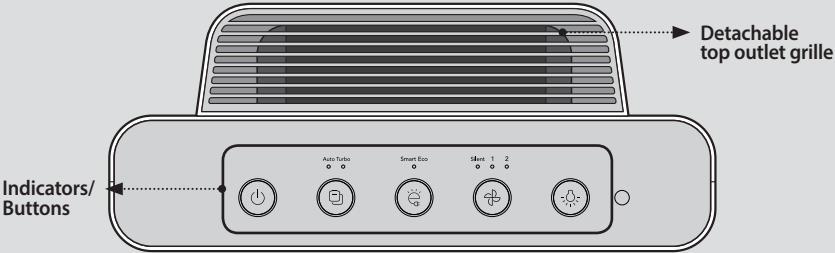
READ AND SAVE THESE INSTRUCTIONS

PARTS NAME

Rear / Front



Top



Components



User manual

AIR PURIFICATION PROCESS

■ Pre-filter

Removes large dust and mold, hair, pet fur, etc.

■ Fine dust filter

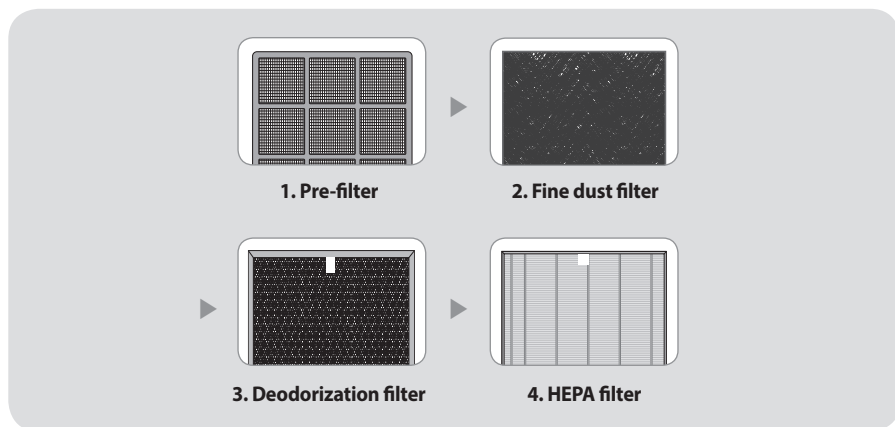
Coway's customized filter that effectively removes fine dust(PM10) and protects the HEPA filter.

■ Deodorization filter

The granular activated carbon Deodorization filter effectively removes odors including food smells and unpleasant household odors and harmful gases.

■ HEPA filter

The high-performance synthetic HEPA filter is excellent at removing cigarette smoke and fine dust.



BEFORE USE

Please check before use

⚠ Only connect the power cord to the voltage rating that matches it on the rating plate.

How to install filter

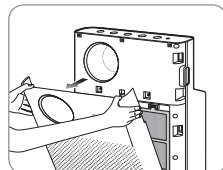


Tips

- Be sure to install the filter after removing the plastic packaging.
 - Only use it indoors.
 - When not in use, remove the power plug from the socket.
 - During filter assembly, check the front of the filters.
- ▶ Filter assembly order: HEPA filter → Deodorization filter → Fine dust filter → Pre-filter

1. Open the front cover.

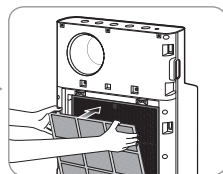
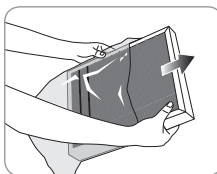
Pull the upper part of the front cover to open.



2. Take out the filter and remove the plastic packaging.

Remove the plastic packaging from filters, excluding the pre-filter, and assemble them in the purifier in order.

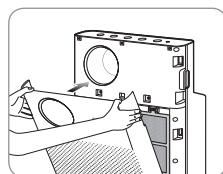
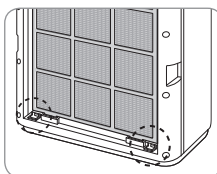
* Filter assembly order: HEPA filter → Deodorization filter → (Fine dust filter) → Pre-filter



3. Reattach the front cover.

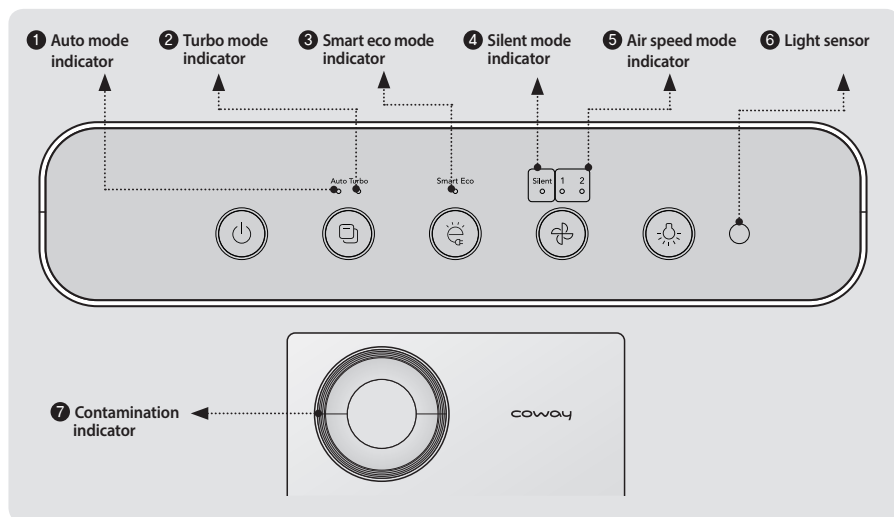
Fit the two tabs on the bottom part of the front cover into their slots and push to install.

* If the front cover is not properly attached, the product will not operate.



INDICATORS AND BUTTONS

Indicators



Auto
○

1 Auto mode indicator

This indicator is illuminated if auto mode is on.

Turbo
○

2 Turbo mode indicator

This indicator is illuminated if turbo mode is on.

Smart Eco
○

3 Smart eco mode indicator

This indicator is illuminated if smart eco mode is on.

Silent
○

4 Silent mode indicator

This indicator is illuminated if silent mode is on.

1 2
○ ○

5 Air speed mode indicator

This indicator is illuminated when level 1/2 air speed is on.

○

6 Light sensor

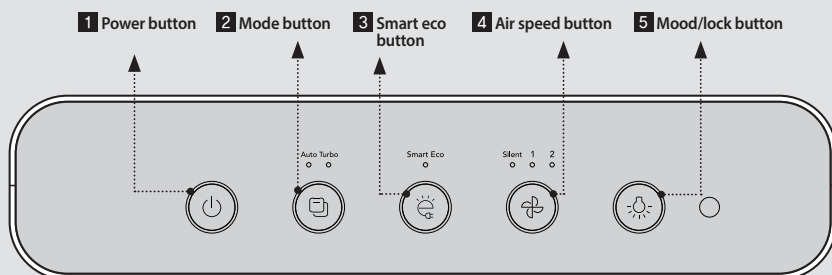
This sensor detects light around the purifier.



7 Air quality indicator

Indoor contamination is shown by LED color.
Clean (blue) → Slight (green) → Heavy (yellow) → Severe (red)

Buttons

**1 Power button**

Use when turning the purifier on and off.

*The purifier begins operating in auto mode the first time, and if it is turned off and on again while in operation, runs in the mode it was in before it stopped.

**2 Mode button**

Press the mode button to go from auto → turbo mode.

**3 Smart eco button**

Enters standby mode when the air stays clean for at least 10 minutes.

**4 Air speed button**

Press the air speed button to cycle air speed between Silent → 1 → 2.

**5 Mood/lock button**

Turns the air quality indicator on or off. Press once to turn off the air quality indicator, press again to turn off all indicators, and press one more time to turn all indicators on.

*Press and hold the lock button for 3 seconds to lock all buttons, and press and hold for another 3 seconds to unlock.

HOW TO USE

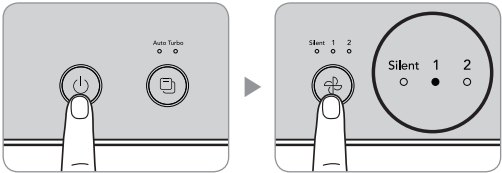


- Plug the power plug into a socket before operating the purifier.
- When the purifier is turned on, it starts in auto mode by default.

■ To operate manually

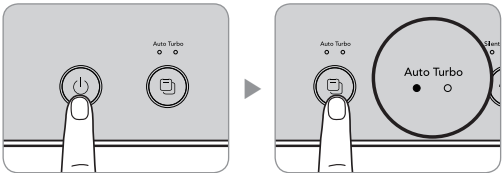
Press the power button to turn on the purifier, and press the air speed button to choose your desired air speed.
(Level 1 → level 2 → silent)

* Press the air speed button while operating automatically (auto/silent/yellow dust) to immediately convert to manual operation.



■ To operate automatically

Press the power button to turn on the purifier and press the mode button to select your desired operating mode.
(Auto → turbo)



► Auto mode

Operates effectively by automatically adjusting the air speed (auto level 1 → auto level 2 → auto level 3) depending on the indoor pollution level detected by the sensor.

This is a convenient operating mode for most users.

	Pollution level 1	Pollution level 2	Pollution level 3, 4
Air speed	Auto level 1	Auto level 2	Auto level 3

* The air speed indicator is off during auto mode.

► Turbo mode

Maximizes air flow during operation to quickly create a comfortable environment.

Turbo may be noisy and consume a lot of energy as it operates at higher air speed than level 2.

► Silent mode

Minimizes air speed during operation to create a quiet, comfortable environment.

This operating mode is quiet and consumes less power.

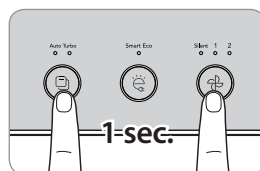
* The air speed indicator is off during silent mode.

ADJUST PARTICLE SENSOR

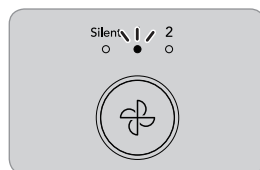
How to adjust the sensitivity of the pollution sensor

When you first turn on the purifier, the air quality sensor is set to standard. You can adjust the sensitivity as follows if the air quality LED stays at severe even after the purifier runs for 2 hours or more with high pollution or the air quality LED stays at clean even if the pollution is high.

- 1. Press and hold the air speed button and mode button simultaneously for about 1 second while the purifier is running.**

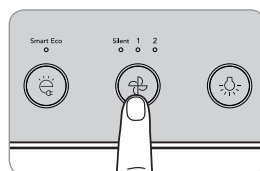


- 2. The air speed mode indicator flashes at intervals of about 0.5 seconds.**



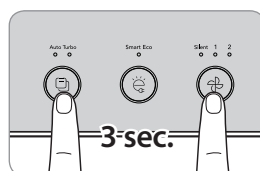
- 3. Press the air speed button to adjust to your desired sensor sensitivity. When sensor sensitivity is selected, the air speed mode indicator flashes as follows.**

Silence	Level 1	Level 2
Sensitive	Standard	Insensitive



- 4. Press the air speed and mode buttons simultaneously for at least 3 seconds again to enter your selected sensitivity to operate the purifier normally.**

* If the air speed button and mode button are not pressed for 10 seconds after selecting sensitivity, the selected sensitivity is automatically input.



CLEANING METHOD



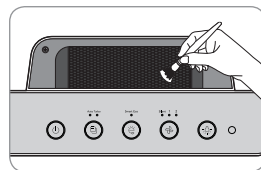
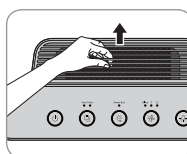
Tips

- Always unplug the power before cleaning.
- Do not use detergents containing organic solvents (solvents, thinners, etc.), bleach, chlorine, or abrasives to clean.
- Do not immerse the purifier in water or sprinkle water on it.

■ Cleaning the vent and detachable vent grille

Lift the detachable vent grille on top of the vent, then clean the grill and vent with a soft brush or vacuum cleaner.

- * Be careful not to let dust enter the vent while cleaning.



■ Cleaning the air quality sensor (clean every 2 months)

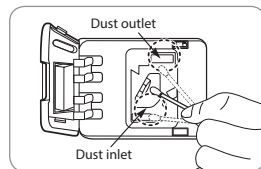
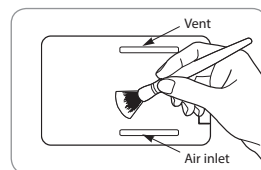
1. Clean the air quality sensor air inlet and vent with a soft brush or vacuum cleaner.

- * Take care that dust does not fall inside the purifier while cleaning.

2. Open the air quality sensor cover on the upper rear of the purifier. (Use the slots on the air quality sensor cover to open it.)

Wet a cotton ball with a small amount of water and wipe the lens, dust inlet, and outlet, then wipe again with a dry cotton ball to remove moisture.

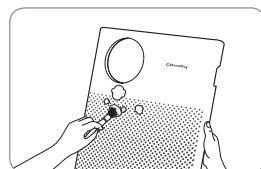
- * If cleaning is not done regularly, the air quality sensor may not work as well.
- * Clean more often in very dusty environments.



■ Cleaning the front cover

Remove the front cover from the purifier and then wipe away dust stuck to the surface with a soft, dry cloth or soft brush.

- * If there is severe contamination, use a damp cloth (do not use abrasives).



■ Cleaning the purifier

Wipe with a soft, dry cloth.

- * If there is severe contamination, use a damp cloth (do not use abrasives).



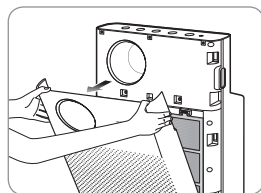


Tips

- Always unplug the power before cleaning the filters.
- The pre-filter can be reused after removing dust and cleaning with water.
- If the pre-filter is not cleaned for a long time, the product performance may decrease and problems may occur.
- Fine dust filter, Deodorization filter and HEPA filter cannot be reused after cleaning. Never clean them with water.

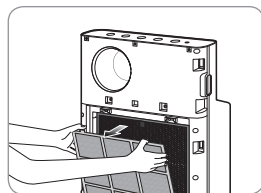
■ Pre-filter (clean every 2-4 weeks)

1. Pull the upper part of the front cover to open.



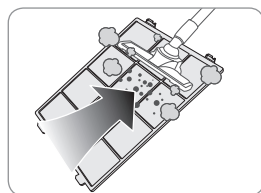
2. Pull the pre-filter handle to take it out.

* Be careful that dust doesn't fall out during removal.

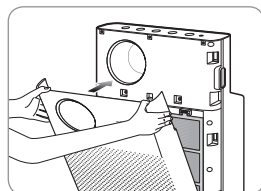
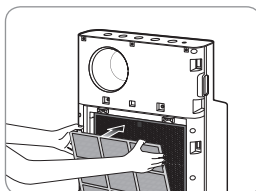


3. Remove dust with water or a vacuum cleaner depending on the degree of contamination

* Be careful not to let dust enter the purifier while cleaning.



4. Push the completely dry pre-filter all the way into the purifier to install it. Close the front cover again.



FILTER REPLACEMENT

■ How to replace

- Refer to the filter installation method specified on page 10 to replace the filters.
- During filter assembly, be sure to check the front.
- Only use genuine Coway filters to keep the purifier at its optimal performance.
- Always unplug the power plug before replacing filters.

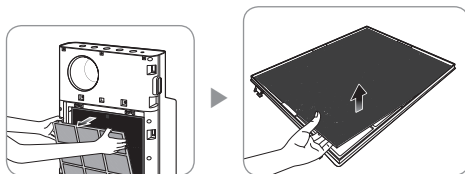
■ Filter cleaning and replacement cycle

Filter	Cleaning / replacement time	Cleaning / replacement
Pre-filter	Once / 2-4 weeks	Clean and wash
Fine dust filter	Once / 4 months	Replace
Deodorization filter	Once / 24 months	Replace
HEPA filter	Once / 12 months	Replace

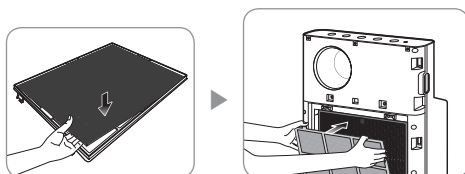
* Based on 24 hour (1 day) use at low air speed
* The filter replacement cycle is the recommended cycle and may vary depending on usage environment.

■ Replacing the Fine dust filter (replace every 4 months)

1. Open the front cover and remove the pre-filter from the purifier, then take out the Fine dust filter.

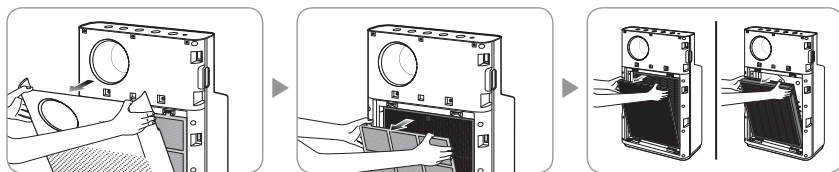


2. Remove the plastic packaging from the new Fine dust filter, then insert it.
Insert the pre-filter into the purifier in the reverse order you removed it, then close the front cover.



■ How to replace Deodorization filter / HEPA filters (replace every 24 / 12 months)

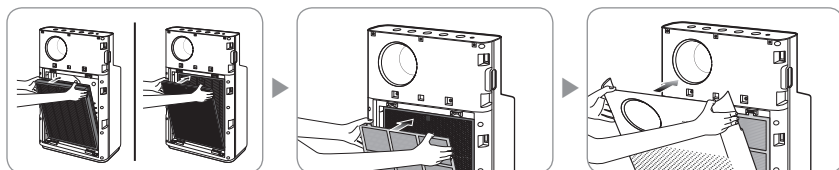
1. Open the front cover and remove the pre-filter and Fine dust filter from the purifier, then take out the Deodorization filter and HEPA filter.



2. Replace them with a new Deodorization filter and new HEPA filter with the plastic packaging removed.

Reassemble the purifier in the reverse order you disassembled it and close the front cover.

* Check the filters' front display.




TROUBLE SHOOTING

The product may not operate correctly due to trivial reasons or inexperienced usage, although these are not product malfunctions. In such cases, the problem can be solved easily without the help of a service center if the following items are checked. If the problem is not resolved even after checking the following, please contact a service center.

Problem	Check	Possible Solutions
There is no breeze.	• Is the power plugged in?	Only connect the power cord to the voltage rating that matches it on the rating plate.
	• Is the entire display off?	Press the power button, then select your desired feature.
	• Is there a power failure?	After the power comes back on, use the purifier.
Air speed doesn't change.	• Is the automatic indicator off?	You can only select air speed in manual mode (normal).
	• Is the silent indicator off?	You can only select air speed in manual mode (normal).
Air speed is very low.	• Is it past time for filter cleaning and replacement?	Check your filter cleaning and replacement cycle and clean or replace filters.
Pollution level doesn't change.	• Is there dust on the air quality sensor lens ?	Clean the air quality sensor lens (p. 15).
	• Does the pollution level continuously appear high?	Set your pollution sensitivity to insensitive or standard (p. 14).
	• Does the pollution level continuously appear low?	Set your pollution sensitivity to sensitive or standard (p. 14).
There's a smell from the vent.	• Is it past time for filter cleaning and replacement?	Check your filter cleaning and replacement cycle and clean or replace filters.
The air quality indicator flashes.	• Request service.	
If other functional flaws occur	• Check the problem, then unplug the power and request service.	

PRODUCT SPECIFICATION

Product name	Air purifier
Model name	AP-1018F
Rated voltage	Refer to the rating plate.
Phase	Single-phase
Power consumption	38 W
Product insulation grade	Class 2 device 
Dust collection method	Mechanical dust intake (HEPA filter)
Safety equipment	Power blocked during door opening/closing
Installation location	Indoors
Recommended area for use	33.9 m ²
Product size	376 mm (width) x 183 mm (depth) x 641 mm (height)
Net weight	7.25 kg
CA certification number	CA03BL18

► Specifications may vary slightly without prior notice to improve product performance.

MEMO

////////////////////////////////////

MEMO

////////////////////////////////////

The Coway logo is displayed in white on a dark gray horizontal bar. The word "coway" is written in a lowercase, sans-serif font, with a distinctive slanted tail on the letter 'y'.

www.coway.com